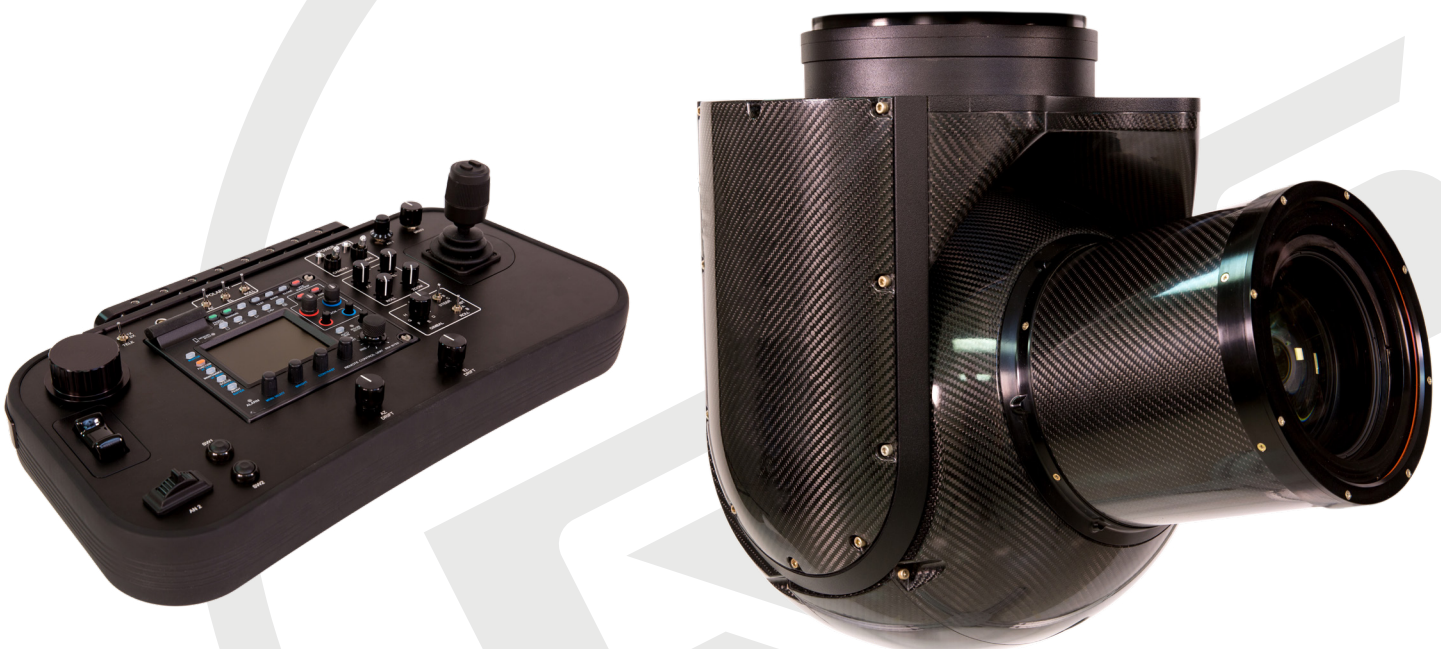


CINEFLEX

The Cineflex is an optimized stabilized platform option for smaller, broadcast payloads. With five-axis stabilization in an extremely small package, this gimbal only weighs 35 lbs (without payload) making it lightweight and versatile!

► SYSTEM FEATURES

- 5-axis advanced gyro-stabilization
- VectorSteering™ look-down with no gimbal lock
- Geo-pointing with moving map interface option
- Continuous digital zoom through 10x
- Isolated electronics eliminates video noise
- Fully upgradeable as gimbal, camera, and lens technologies evolve
- Stabilized or steerable horizon with in-flight automatic calibration
- No ITAR or EAR export restrictions
- Ships as excess baggage (<70lbs/32kg per case)
- MIL-STD-810F power filters with reverse polarity protection
- Engineered/Manufactured to DO-160G standards - not certified
- Platform designed for both standard and inverted use
- GroundControl™ wireless, bi-directional, gimbal control
- Metadata outputs (lens, camera, & GPS functions)
- Remote controlled optical filter system
- Electro-mechanical gimbal stow mechanism
- Compatible with existing air and ground mounts
- Standard 1-year warranty and 24/7/365 customer service



► SYSTEM SPECIFICATIONS

Gimbal Performance

5-axis advanced fiber optic gyro-stabilization
Azimuth: 360° continuous
Elevation: 35° to -210° from horizontal
Roll: +/- 90° (steerable/stabilized)
Gimbal slew rate: 0-130°/second
Max operational airspeed: 200 knots

Interface

Control: RS-232, RS-422, or ethernet

Electrical

VIN: 18-33 VDC
Power: 15 amps max draw at 28 VDC

Dimensions

Gimbal width: 13.7 inches (347 mm)
Gimbal height: 17.7 inches (450 mm)
Snout length: 0-6 inches (0-152 mm)
Cable set length: 20 - 100 feet

Weight

Platform: 35 lbs (15.9 kg) + payload
Laptop Control Unit: 7 lbs (3.2 kg)
Auxiliary Junction Unit: payload specific
Cable Set: 8 lbs (3.6 kg)

Environmental

Operating temperature: -4° to +122° F (-20° to +50° C)
Sealed system for airborne/ground/marine applications

Camera/Lens Payload Options

Sony HDC-P1 & HDC-P43
Ikegami HDL-F3000 Low-Light
Grass Valley LDX Compact HD/4K
Panasonic AK-UB300 4K
Canon ME20F-SH Low-light
NEC NC-H1200S
Other cameras available upon request *

Interchangeable Lens Options

Canon HJ Series HD/4K
Fujinon HA Series HD/4K
Other lenses available upon request *

Helicopter/Airplane Mount Availability

AS 350/355 Bell 206/206L/407 Bell 505
EC-120 Robinson R44/R66 Cessna 172/206
Compatible with various other aircraft *

Vehicle/Marine Mount Configurations

Arm Mounts Mitchell Mount
Various other mount types from many manufacturers *

* Specifications are subject to change

